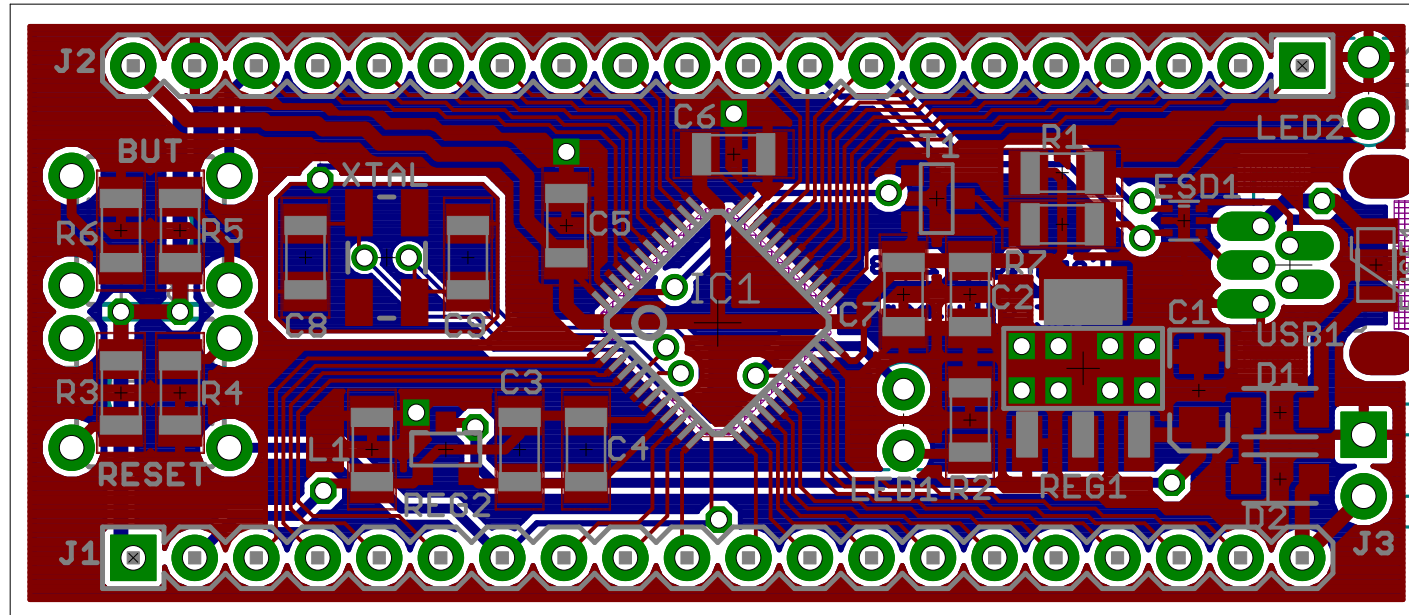


Orone-wide-mini-v0Xr001 40pin 0.8" row spacing



Copyright 2013 G. Bulmer

Last modified: 31/03/2013 20:43

The pin headers are standard 'breadboard friendly' 0.1" pitch.

The two rows of pin headers are 0.8" apart, and hence fit a single breadboard.

The board is 2.3" long x 1" high.

Notes: Change from 0805 to 1206 components is too much to fit in mini 2.1" length
Hence the board is lengthened from 2.1" to 2.3"

Routing: All Crystal tracks & Top Layer MCU tracks are 6mil/6mil
in order to make enough space for components and isolation.

All tracks from thru-hole (hand soldered) components, except pin headers,
are 10mil or wider. This is intended to make the tracks more robust.

All Bottom Layer tracks are 10mil or bigger, except Crystal tracks;
this is intended to be easier to make.

Copper pours have 10mil isolation; this is intended to be easier to make.

Vias: The three via shapes are used to give information, and help 'read' the PCB.

Vias Key: SQUARE: Digital Ground (DGND)

ROUND: Signal

OCTAGON: Power (e.g. Vcc) or segregated Ground (e.g. AGND)